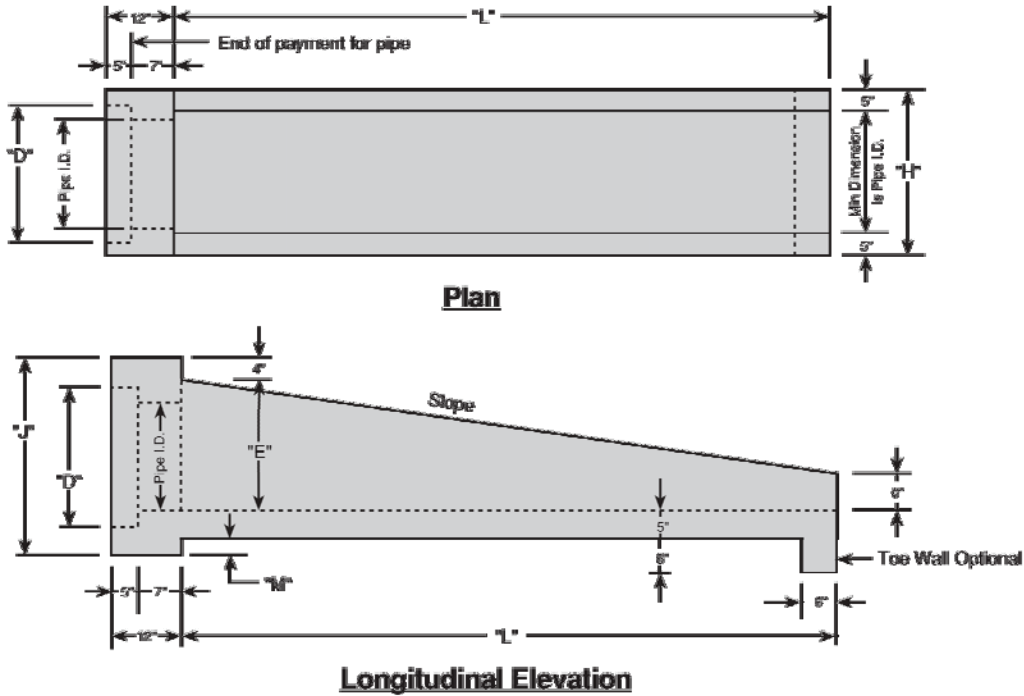


# Precast Drainage Structures



Basic Dimensions							
Pipe Dia. (In.)	Slope	"D" (In.)	"E" (In.)	"H" (In.)	"J" (In.)	"L" (In.)	Weight (Lbs.)
12	3:1	17.000	17.000	28.00	26.250	34.000	1,398
	4:1	17.000	17.500	28.00	26.250	46.000	1,558
	6:1	17.000	17.500	28.00	26.250	68.000	2,017
15	3:1	20.500	17.500	28.00	26.250	34.000	1,243
	4:1	20.500	17.500	28.00	26.250	46.000	1,472
	6:1	20.500	17.500	28.00	26.250	68.000	1,631
18	3:1	24.000	21.000	36.00	30.000	45.000	1,751
	4:1	24.000	21.000	36.00	30.000	60.000	2,016
	6:1	24.000	21.000	36.00	30.000	90.000	2,851
24	3:1	31.000	27.500	37.00	37.000	64.000	2,851
	4:1	31.000	27.500	37.00	37.000	86.000	3,585
	6:1	31.000	27.500	37.00	37.000	128.000	4,818
30	3:1	38.500	34.500	41.00	44.500	85.500	4,082
	4:1	38.500	34.500	41.00	44.500	114.000	5,082
	6:1	38.500	34.500	41.00	44.500	171.000	7,060
36	3:1	45.500	41.000	47.00	51.500	108.000	5,544
	4:1	45.500	41.000	47.00	51.500	140.000	6,827
	6:1	45.500	41.000	47.00	51.500	210.000	9,722

**Note:**

- The Safety End Treatment option shown on this sheet should only be utilized in the following instances:
  - On cross-drainage structures for 36" or smaller diameter pipes.
  - On parallel-drainage structures for 30" or smaller pipes.
- Cross & Parallel drainage structures larger than the requirements listed above shall utilize other safety end treatment designs shown elsewhere in the plans.
- All exposed corners shall be chamfered 3/4".
- Manufacture of this product shall conform to the requirements of Item 467 except that minimum reinforcing shall be #4 @ 6" (Grade 40) or #4 @ 9" (Grade 60) each way or 6 x 6 - W12 x W12 or 5 x 5 - W10 x W10 welded wire fabric.
- Concrete for precast (steel formed) sections shall be a minimum of Class "C" (4,000 psi).
- At the option and expense of the contractor, the next larger size of Safety End Treatment may be furnished as long as the "D" dimension cast is that of the required size of pipe.

**-No Scale-**  
All dimensions subject to allowable specification tolerances.

TITLE	PLANT	STATE	SECTION/PAGE	DATE	
Precast Safety End Treatment For Reinforced Concrete Pipe	Grand Prairie Houston	TX	7.4	07-01-08	



PREPARED BY: THE CITY OF SULPHUR SPRINGS ENGINEERING DEPARTMENT

CITY OF SULPHUR SPRINGS  
DEVELOPMENT MANAGEMENT MANUAL  
DETAIL DRAWINGS  
  
PRE-CAST RCP SAFETY END TREATMENT

SCALE: NTS  
DATE: 12.12.2013  
DR. BY:  
CK. BY:

DRAWING NUMBER  
**FIG.-9.05**